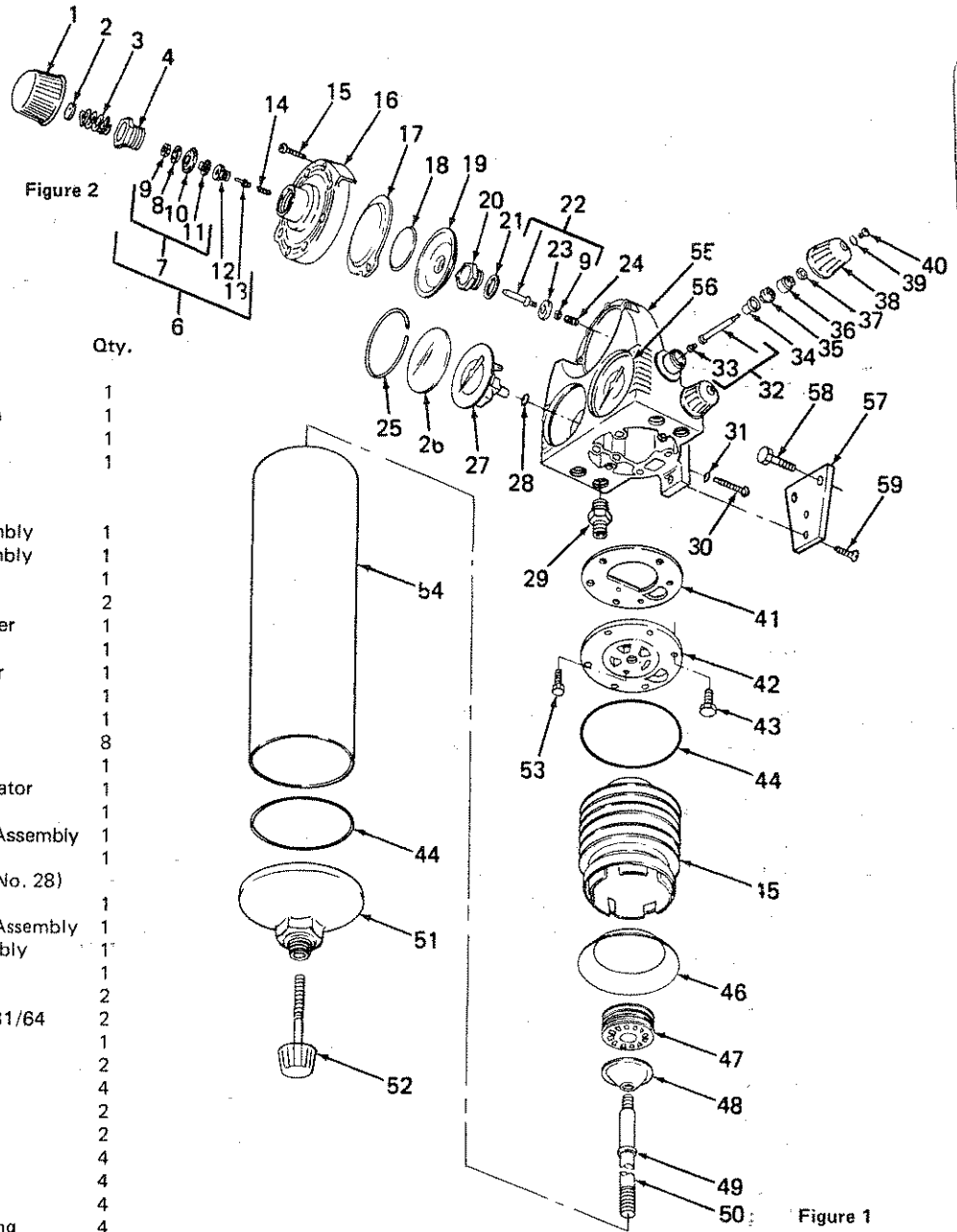


HLG-501 Transformer



Ref. No.	Replacement Part No.	Description	Qty.
1	HLD-403	Knob Assembly	1
2	HLD-10	Depressor Button	1
3	HLD-7	Spring	1
4	HLD-38-1	Retaining Nut	1
5	—	Not Used	
6	HAA-408	Pilot Valve and Diaphragm Assembly	1
7	HLD-401	Diaphragm Assembly	1
8	SS-9888-CD	Backing Plate	1
9	SS-777	Hex Nut 10-32	2
10	HLD-35	Diaphragm—Upper	1
11	HAA-15	Valve Seat	1
12	HAA-14	Valve Seat Holder	1
13	HAA-407	Valve Assembly	1
14	KN-40	Spring	1
15	SS-3083	Machine Screw	8
16	HLD-18	Regulator Cap	1
17	HLD-6	Diaphragm Regulator	1
18	HAA-8	Diaphragm Plate	1
19	HLD-402	Baffle and Bush Assembly	1
20	HAA-29	Valve Seat Nut (Also order Ref. No. 28)	1
21	HAA-28	Gasket	1
22	HAA-404	Regulator Valve Assembly	1
23	HAA-409	Valve Seat Assembly	1
24	HLD-11	Spring	1
25	HLD-14	Snap Ring	2
26	—	Gauge Glass — 2-31/64	2
27	GA-160	Gauge — 160#	1
28	JGS-72-K10	Gasket	2
29	AD-26	Coupling	4
30	SSF-3047	Cap Screw	2
31	HLG-5	Gasket	2
32	HLD-410	Valve Assembly	4
33	SS-9720	Machine Screw	4
34	HLD-16	Packing Seat	4
35	HLD-30	Valve Stem Packing	4
36	HLD-29	Packing Nut	4
37	HLD-53	Knob Thrust Washer	4
38	HLG-1	Valve Knob	4
39	HLD-31	Spring Washer	4
40	SS-9721 — NI	Machine Screw	4
41	HLD-52	Head Gasket	1
42	HLD-51	Separator — Top Plate	1
43	SS-12	Cap Screw — 5/16 x 3/4	6
44	HLC-16	Gasket	2
45	HLD-22	Separating Tube	1
46	HLC-14	Separating Tube Skirt	1
47	HLC-18	Air Filter	1
48	HLD-24	Filter Support	1
49	HLE-10	Retaining Ring	1

Ref. No.	Replacement Part No.	Description	Qty.
50	HLD-13	Separator Tie Rod	1
51	HLG-2	Tube End Cap	1
52	HLG-3	Drain Valve	1
53	SS-10022	Cap Screw 1/4-20 x 1/2	1
54	HLD-12	Separator Tube	1
55	HLD-50	Transformer Head	1
56	GA-257	Gauge — 250#	1
57	HL-62	Mounting Plate	1
58	SS-1463	Lag Screw	2
59	SS-3051	Machine Screw 5/16 x 1/2	2